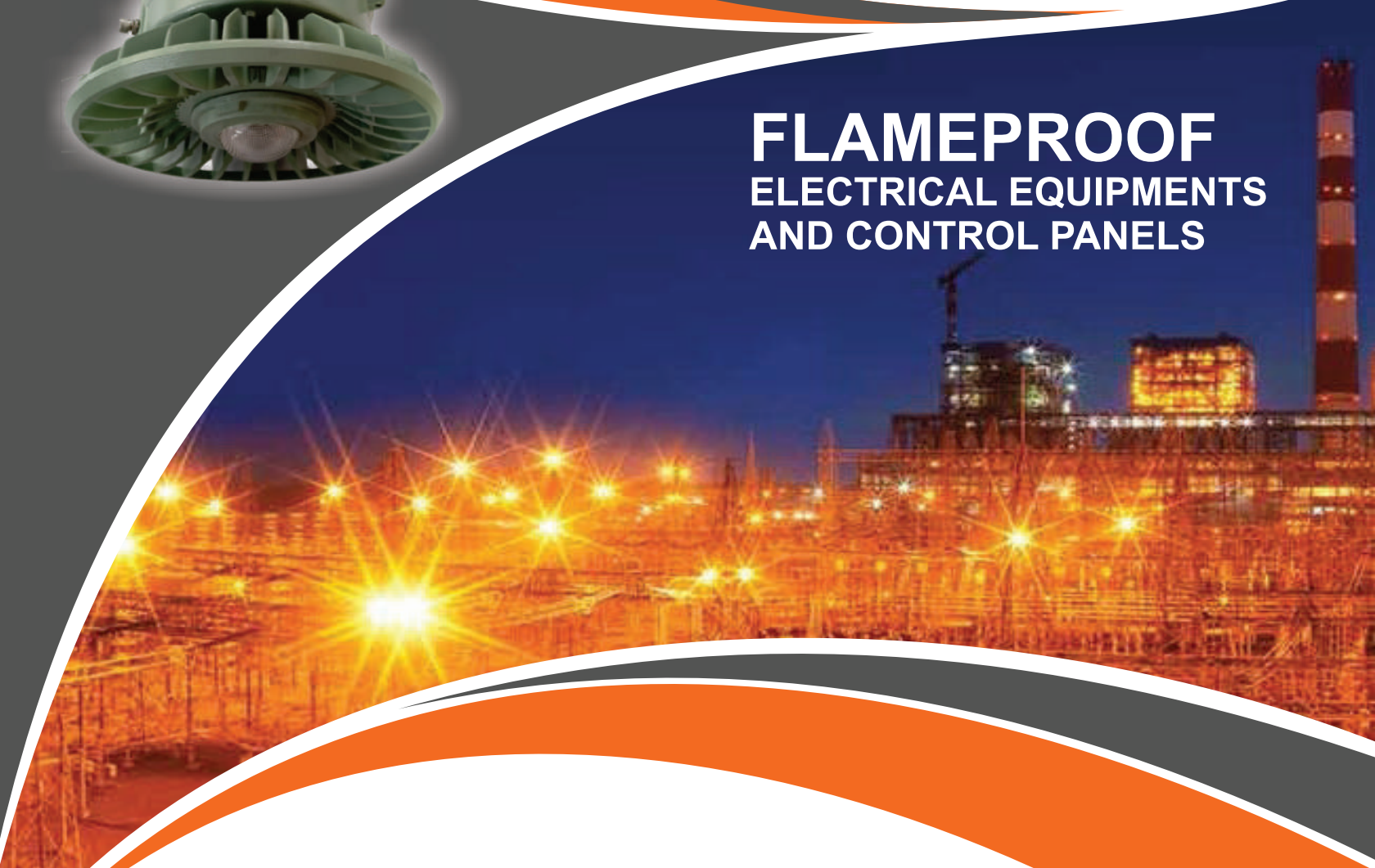




FLAMEPROOF ELECTRICAL EQUIPMENTS AND CONTROL PANELS



Tested & Certified by CIMFR, Dhanbad.
Approved by PESO (CCOE), Nagpur,
BIS with ISI Marking

Flameproof / Weatherproof Enclosures & Operating Panels



Instrument Enclosure



Remote Panel with RPM Indicator



Instrument Enclosure



DOL Starter



Lamp with Selector Switch



Hooter with Accept & Reset



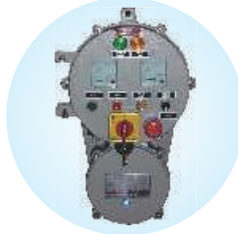
Emg. Stop with Selector Switch



Indicator With Lamp & PD



Enclosure for EL + MCB



Analog Ammeter with Switch



Indicator with Emg. Key Type



PLC Control Panel



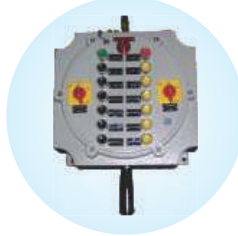
Control Panel with Switchgear



AC Drive Control Panel



Operating Panel



8/10/12/14 Way Pendant



Allen Bradely HMI Panel

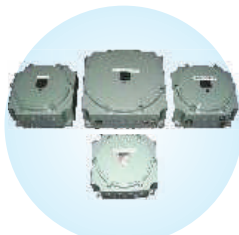


AC Driver Control Panel

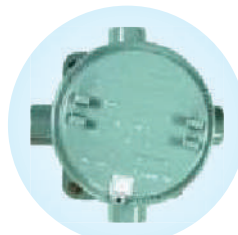
Flameproof / Weatherproof Junction Box with Cable Glands



Siemens HMI Panel



Junction Box (Gr. IIA, IIB, IIC)



Junction Box (Dia 100)



Junction Box (Dia 120)



Cable Glands (Gr. IIA, IIB, IIC & ATEX)



Compression Panel

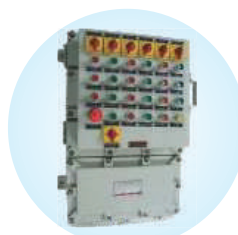
Flameproof / Control Panels



Feeder Control Panel



Distribution Board



Operating Panel



Distribution Panel with Canopy



Heater Control Panel



Control Panel



HMI Panel with Switchgear



Hooter with Indicators & Lamps



Control Panel



Annunciator Control Panel



Operating Panel



Operating Panel

Flameproof / Weatherproof Limit Switches



Control Panel with
HMI Display



PLC control Panel



Gravity Type
Limit Switch



Two Way Lever Type
Limit Switch



Lever Type
Limit Switch



Roller Type
Limit Switch

Flameproof / Weatherproof Limit Switches



4 Way Switch Socket



Plug in Switch Socket
with MCB



Air Conditioning Unit
(Window & Split AC)



Exhaust Fan



Pedestal Fan



Wall Mounting Fan

Flameproof / Weatherproof Air Conditioner & Fans

Flameproof / Weatherproof Clean Room Application



Clean Room Rotary
Switch 2 Pole, 16AMP



Clean Room Bulkhead
Fitting 2X18W CFL /
2X26W CFL / 1X70W MH



Clean Room
Bulkhead Fitting
2X36W CFL / LED

Flameproof / Weatherproof Light Fittings



Well Glass Fitting
125W HPMV / 70W MH



Well Glass Fitting
250W HPMV / 150W MH



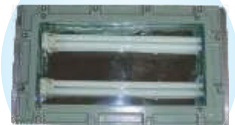
Well Glass Fitting
45W CFL / 2X26W CFL



Flood Light Fitting
250W / 400W HPMV
150W / 250W / 400W MH



Bulkhead Fitting
1X26W CFL /
2X26W CFL



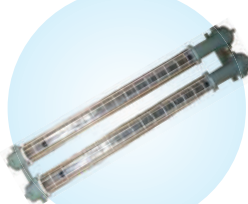
Bulkhead Fitting
Bottom / Top Opening
2X36W CFL



Reactor Vessel
LED Lamp



Control Gear Box
for Flood Light



FTL Tube Light
1/2X36W (4 feet)

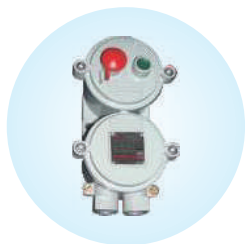


Hooter with
Beacin Lamp



Plug in Switch Socket
Transformer 24V DC with
Hand Lamp

Flameproof / Weatherproof Control Station & Receptacles



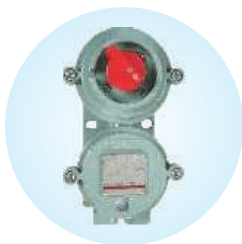
Start-Stop
Push Button



Start-Stop Push
Button with Lamp



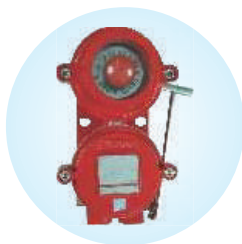
Start-Stop (Key Type)
Push Button



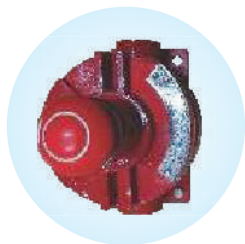
Rotary Switches
2/3 Pole, 6/10/16/25
Amp



Plug in Switch Socket
3/5 Pin, 16/25/32/63 Amp.



Manual Call Point



Emergency Stop



Hooter
230V AC/24V DC



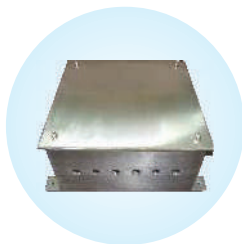
MS Drive
Control Panel



Flameproof Control
Panel in SS
Enclosure



MS Distribution
Control Panel



Junction Box
SS 304 / SS316

Flameproof / Weatherproof LED Light Fittings



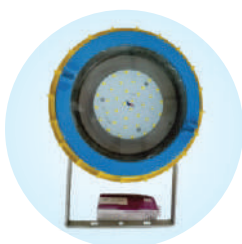
Led Light Fitting
30W/45W/60W



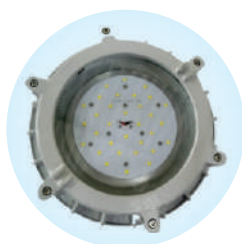
Flood Light
70W



Led Light Fitting
80W/120W/150W



FLOOD LIGHT
150W



Flood Light
300W



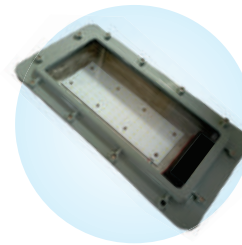
Flood Light
300W



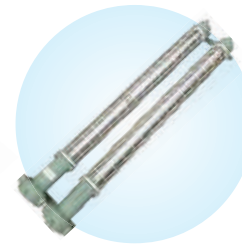
LED Well Glass Fitting
30W/45W/60W



LED Flood Light Fitting
60W/90W/120W



LED Bulkhead Fitting
2X20W/2X30W



LED Tube Light Fitting
2X18W/2X20W (4 feet)

FLAMEPROOF ELECTRICAL EQUIPMENTS

Area of Application :

- Ordnance, Ammunition & Missile Storage Depots.
- Flameproof Zone I & II
- Gas Group IIA, IIB & IIC
- Petrochemicals, Refineries, Fertilizer, Paint Industries, Pharma Industries etc.



Girnar lighting

Office no 1, Mini Floor, Rivendell House, 2nd Dhobitalao Lane,
650, JSS Road, Next to David & Co, Near Metro Cienmas,
Marine Lines, Mumbai - 400002.
+91 9619379984



@girnarlighting_official



@girnarlighting_official



@girnarlighting_official